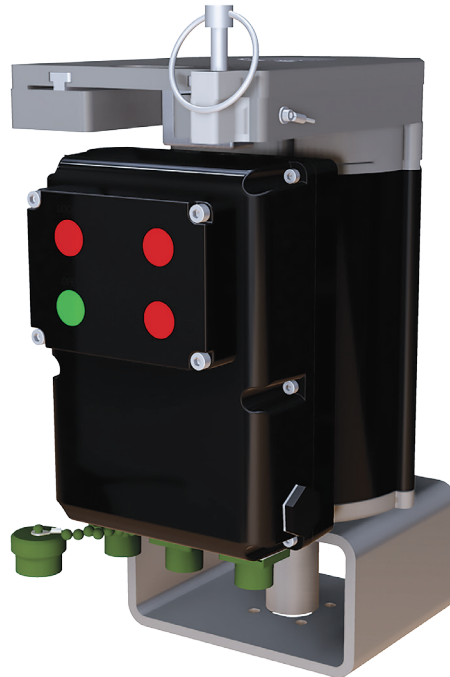


QT-250-MIL

ELECTRIC QUARTER-TURN VALVE ACTUATOR



OVERVIEW

NAG Marine QT Series electric valve actuators offer a high level of precision valve control. They are an ideal solution for requirements demanding accurate flow control, easy installation and low cost operation.

NAG electric valve actuators are designed to meet or exceed DOD-V-24657(SH) requirements, and to be maintenance free. All NAG Marine actuators feature completely enclosed, permanently lubricated transmissions to ensure extended reliable service in the harshest operating conditions.

FEATURES

- Precise quarter-turn control
- IP68 Stainless Steel housing (Aluminum available)
- Easy installation and/or retrofit
- User-configurable torque, closing time, and position
- Permanently lubricated
- Low power consumption
- Manual emergency override

QT-250-MIL SPECIFICATIONS

Technical Data	
Torque	36-185 ft/lbs (250 Nm max) (user-configurable)
Valve Applications	Butterfly and ball valves with partial turn operation (typical)
Valve Flange	See notes
Min-Max Closing Time	20-60 seconds (user-configurable)
Mechanical	
Dimensions (H,W,D)	9.01, 6.14, 8.22 in (229, 156, 209 mm)
Weight	55 lbs (24.9 kg)
Housing	IP68 (continuous submersion in accordance with DOD-V-24657(SH)) corrosion resistant stainless steel housing
Operating Temp.	-13° to 131°F (-25° to 55°C)
Over Temp. Protection	Current controlled
Under Temp. Protection	Stator coils used as heating element
Finish	Black
Electrical	
Supply Voltage	110-240 V AC/DC 50/60 Hz 3PH, 440 VAC, 50/60Hz
Power Consumption	Max: 240W/560 VA
Cables & Cable Glands	
	Up to five (5) M20 cable glands allow for serial connection of power supply and fieldbus wiring Actuator housing includes threaded mounting holes Use IP68 glands for all wires to maintain IP rating Optimized for fieldbus installation (refer to installation manual for specific requirements) Circular MIL connectors for power/control/configuration
Control	
Interface Options	Digital: 2x digital input (Open & Close) 3x digital output (Open, Closed & Alarm) Analog: analog input (Set Position) analog output (Feedback Position) digital output (Open, Closed & Alarm) CANopen Fieldbus: Max. 127 nodes/network, allows positioning and other extended controls ModBus
Indicators	Local/Remote/Close/Open/Stop
Network Valve-Position Sensor	Absolute position sensor, provides correct feedback even after power failure
Resolution	0.39% / 0.35° & 360° range
Configuration/Set-Up	USB connection to PC with Eltorque Manager v.3
Configurable Parameters	Open & Closed positions Speed, torque, valve position, valve seat position Inverted I/O or fieldbus parameters depending on control interface
Emergency & Safety	
Manual Operation	Standard fixed hand wheel, mechanical valve-position indicator
Appx. Number of Turns	21 - 0-100% / 0-90°
Certifications & Approvals	
Shock	Built to meet or exceed MIL-STD-901D
Vibration	Built to meet or exceed MIL-STD-167-1A
Electromagnetic Interference (EMI)	Built to meet or exceed MIL-STD-461E
API 607	In accordance with DOD-V-24675(SH)
Service 1	In accordance with DOD-V-24675(SH)